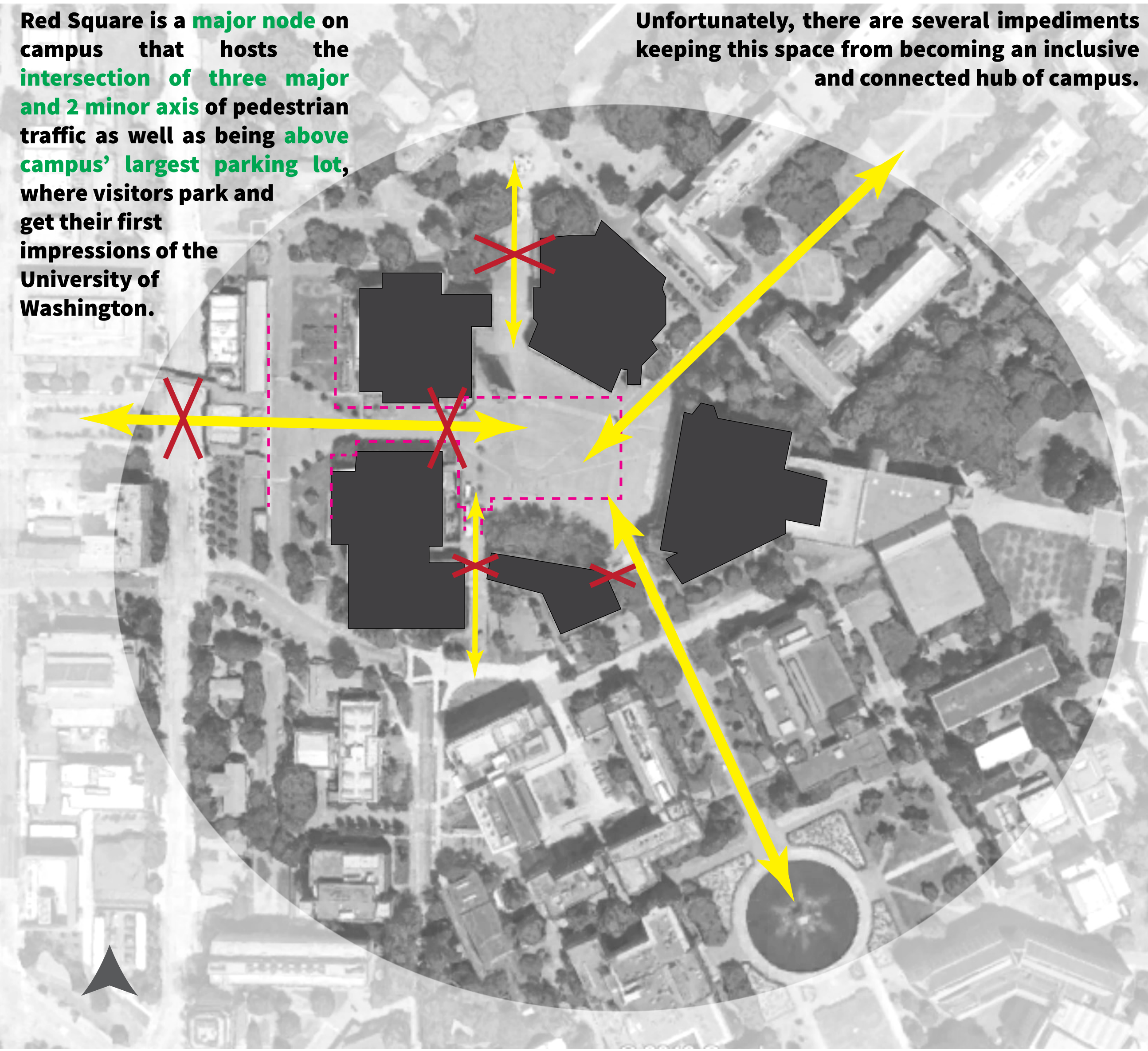


Feels Full When It's Empty, Feels Empty When It's Full

Red Square is a major node on campus that hosts the intersection of three major and 2 minor axis of pedestrian traffic as well as being above campus' largest parking lot, where visitors park and get their first impressions of the University of Washington.

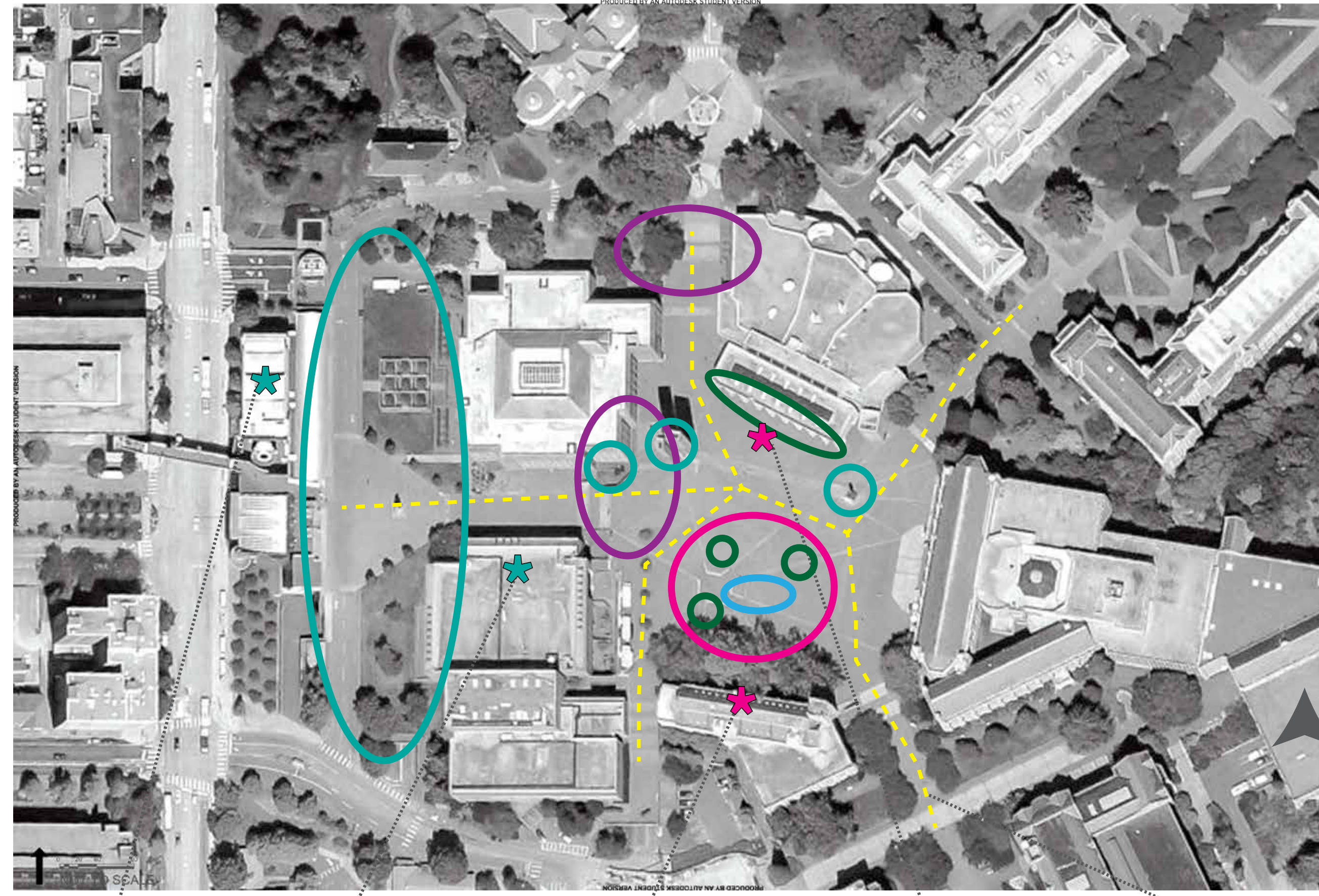
Unfortunately, there are several impediments keeping this space from becoming an inclusive and connected hub of campus.



- IMPEDIMENTS**
- No Accessibility (Stairs only)
 - Hidden, Uncomfortable Garage Entrance
 - Uninviting Pedestrian Entrance
 - Slippery, Partially Activated, Baren Landscape

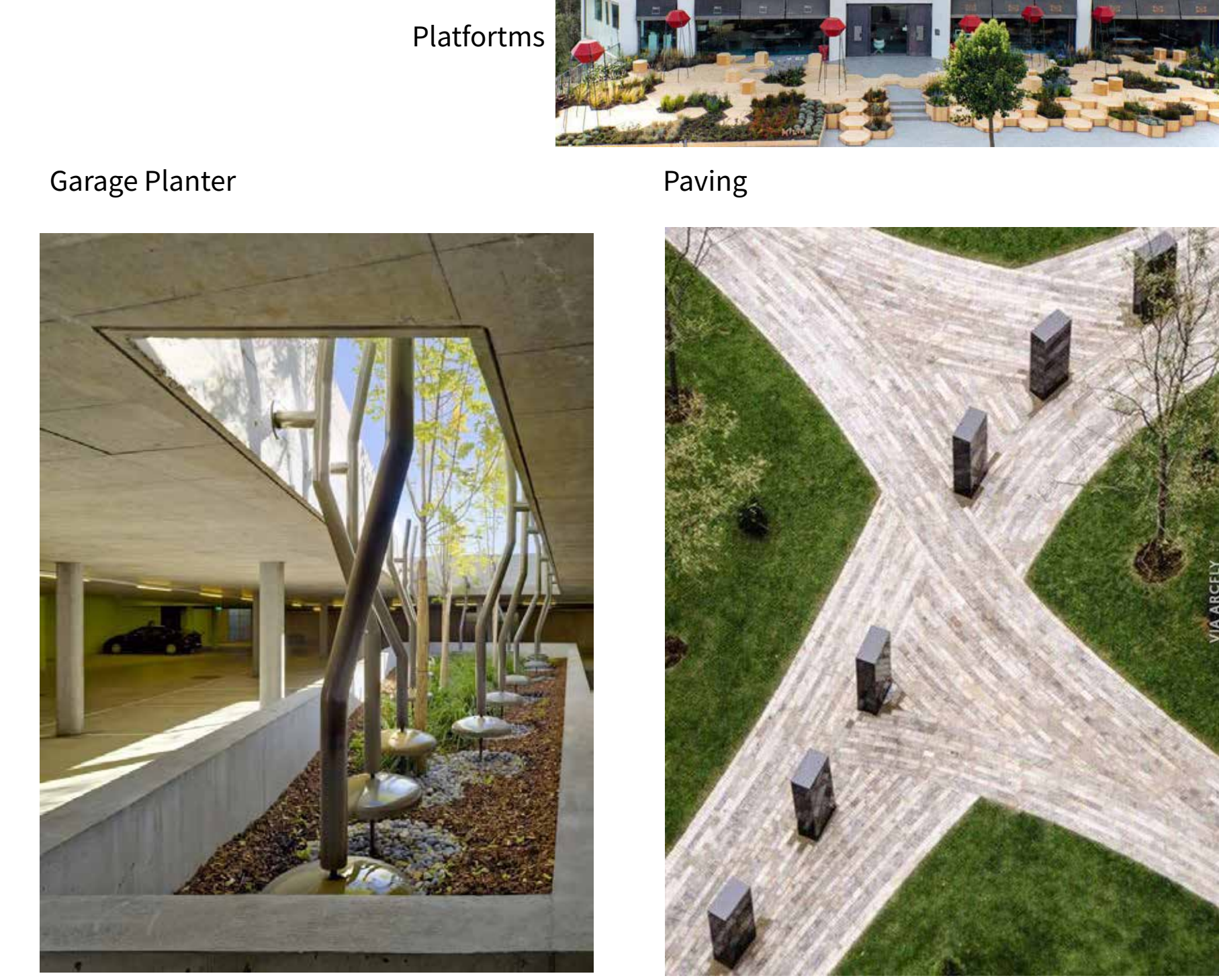
- GOALS**
- Increase ADA Accessibility
 - Better Wayfinding Between Garage and Square
 - Create a Meaningful West Entrance
 - Better Use of Space and Greenery

Program



- Celebrate the arts by creating a sculpture garden as the new main entrance that connects to Campus Parkway.
- Raised area adds seating for a more comfortable stay and provides elevated views for protests or concerts.
- A new centrally located garage entrance brings visitors directly to the heart of campus.
- Additional ramps improves ADA mobility and interaction in the space.
- Vegetation and a green wall make the space more inviting and add variety.

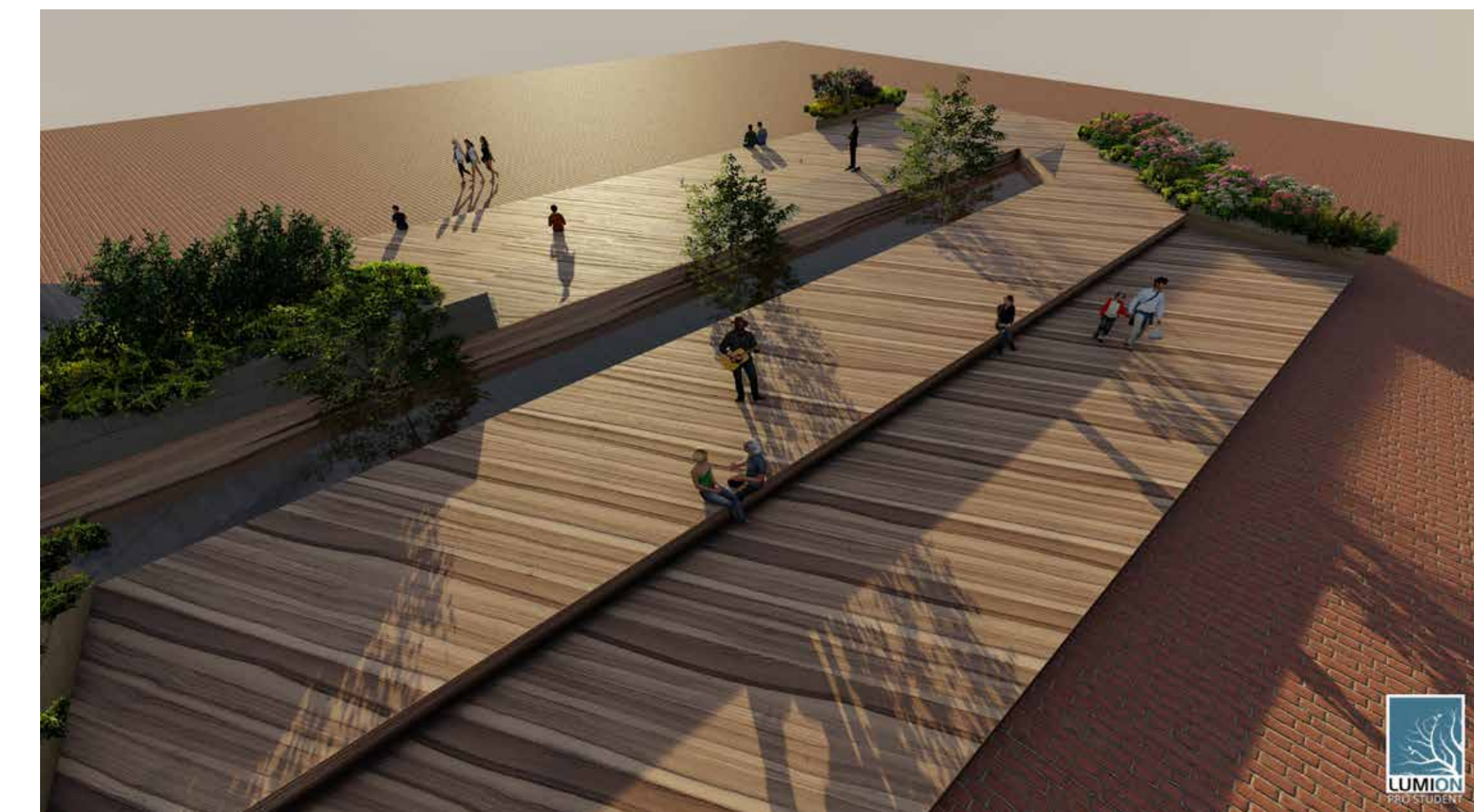
Precedent Images



Plan



Platform with Central Access to Garage Vignettes



Garage Connection to Red Square Section

